

## HOUSEHOLD HAZARDOUS ACCEPTABLE MATERIALS

### Garage &

### Workshop

Acids/bases  
Acetone  
Aerosol cleaners  
Antifreeze  
Auto polish  
Auto starter fluid  
Brake fluid  
Car wax  
Carburetor cleaner  
Caulk, labeled  
flammable  
Contact cement  
Driveway sealer  
Epoxy  
Fluorescent ballast & tubes  
Fluorescent compact bulbs  
Gasoline & Kerosene  
Glues  
Lighter Fluid  
Paint, oil & lead based  
Paint remover  
Paint thinner  
Petroleum based  
adhesives  
Roofing tar  
Shellac  
Stain  
Varnish  
Windshield washer  
Solution

### Home & Garden

Aerosol cans  
Batteries, rechargeable  
Batteries, button  
Brush killers  
Concrete cleaners &  
etches  
Fertilizers  
Fungicide  
Mercury  
Metal polish (Solvent  
based)  
Moth balls  
Pesticides  
Pool Chemicals  
Rat, mouse & gopher  
poison  
Rust removers  
Spot remover  
Wall paper remover  
Weed Killer

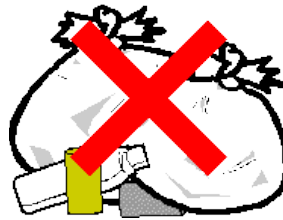
### Kitchen & Bathroom

Ammonia based  
cleaners  
Cleaners (solvent  
based)  
Drain cleaner  
Floor care products  
Oven Cleaner  
Polish remover  
Sharps (Syringes)\*

\*Sharps (Syringes) must be in either a red sharps plastic container or a hard plastic detergent bottle. The detergent bottle must have the cap screwed on and it must be taped closed. **No milk jugs are allowed.**

Residential Household Hazardous Waste: Call to schedule a no charge appointment Monday thru Friday between 9am-3pm with Marshall County Landfill @ (641) 752-0646, or call Metro Hazardous Waste, Bondurant toll free 1-888-603-2739.

## Unacceptable Household Hazardous Materials



Propane tanks (recycle for fee at the landfill)  
Empty containers go in the garbage  
Materials in containers larger than 5 gallons  
Ammunition or explosives  
Asbestos\*  
Radioactive materials  
Fire Extinguisher  
Latex Paint

\*For information relating to disposal of Asbestos containing material, contact the landfill at (641) 752-0646.

## Proper Disposal of Latex Paint

- Donate unused latex paint to a friend or a non-profit group (ex. housing project, school, or church group).
- Mix light colors together to use as a primer.
- Completely dried and hardened latex paint can be placed in your regular trash. Leave the lid off.
- Small quantities of latex paint can be dried by removing the lid and allowing the paint to dry. Keep it in a well ventilated area.
- Large quantities of latex paint can be poured in layers in a cardboard box/lid lined with plastic or newspaper.
- Stir kitty litter or saw dust into the latex paint. Once the paint is fully absorbed and hardened it may be placed in the trash with the lid off.

# DISPOSAL & RECYCLING PROGRAMS



**ALL LOADS MUST BE  
COVERED!**

## MARSHALL COUNTY LANDFILL

2313 MARSHALLTOWN BLVD  
MARSHALLTOWN, IA 50158  
(641) 752- 0646

[www.marshallcountylandfill.org](http://www.marshallcountylandfill.org)

**Like us on Facebook**

### LANDFILL HOURS

Monday-Friday 8:00 AM - 4:00 PM  
Saturdays 8:00 AM - 12:00 PM

### HOLIDAYS CLOSED

New Years Day, Memorial Day, July 4th,  
Labor Day, Thanksgiving, Christmas

### PAYMENT METHODS:

Cash, Marshall County Checks, and Credit/Debit Cards with a 3% convenience fee (min. \$1 fee)

Spring 2024

**Basic Garbage Charge:** \$58.00 per ton  
\$15.00 minimum

These items are dropped off at the Landfill Recycling Area **before** your load is weighed or you will be charged a mixed load fee of \$116.00 per ton with a \$30 minimum.

**Residential Recycling** \$5.00 minimum  
More than 4 containers full \$10.00 charge

**Used Motor Oil** \$5.00 charge  
Up to 10 gallons

**Lead Acid Batteries** No Charge

**Scrap Metal** No Charge

Examples: iron, bed frames, bicycles, lawn Mowers (fluids drained), lawn chairs, and other metal objects except no nails or bolts.

**Appliances** \$15.00 each

Examples: refrigerators, freezers, dishwashers, stoves, washing machines, dryers, hot water heaters, microwaves, dehumidifiers, air conditioners, & furnaces.

**Propane Tanks** \$6.00 each

We do not accept tanks with acetylene.

**Tires** \$350/ ton

13" - 21" \$ 5.00  
22" - 28" \$10.00  
Rear Tractor \$20.00  
Tires on rims \$ 2.00 extra

**Absolutely no scavenging—it is illegal in the State of Iowa & prohibited at all landfills.**

Recycling has been mandatory since 1995 in the Marshall County Landfill Service Area by the ordinance of all towns and in the countryside.

### **Residential Recycling**

#### **Glass:**

- Rinse clean.
- Labels do not need to be removed.
- Broken items go in the garbage.
- Do not recycle drinking glasses, window glass, mirror glass, Pyrex, or crystal.

#### **Tin Cans:**

- Clean and remove labels.
- Remove the lid and throw it in the garbage.
- Aerosol cans if empty go in the garbage or see HHM list.
- Return aluminum cans for a deposit.

#### **#1, #2, #5 Plastics:**

- Look for # on the container (usually on the bottom).
- Clean it/ Rinse it out.
- Remove lid and throw it in the garbage.
- Any empty plastics from cooking oil, motor oil, antifreeze, or a hazardous material should be placed in the garbage.
- All other numbers of plastics go in the garbage.

#### **Plastic bags and film (#4):**

- Can be taken to your local grocery store or the landfill office to be recycled.

#### **Paper Products:**

- All of the newspaper contents, junk mail and used paper (any color) can be recycled.

#### **Cardboard:**

- Break down corrugated cardboard and paper-board boxes like cereal boxes and shoe boxes to be recycled.
- Any wax coated or soiled paper and cardboard should be put in the garbage Ex. Pizza boxes

**Charges for recycling and solid waste services are available by contacting the haulers.**

### **Haulers**

Area Sanitation Jerry's Sanitation  
641-752-8900 641-487-7288

LeGrand Sanitation  
641-479-2615

Moler Sanitation Stone Sanitation  
641-366-2575 641-752-7165

### **One-time cleanup or garbage removal**

Devig Services  
641-750-2298

Junk Relief  
641-750-9581

Wild Cleaners  
641-758-9149



### **Composting**

The landfill **does not accept** any trees, branches, leaves, or yard and garden waste for disposal. These items must go to the City of Marshalltown Compost Facility at 900 Woodland Street. (641) 844-1844

### **ITEMS NOT ACCEPTED**

The landfill **does not** accept any free liquids, hazardous waste, whole car bodies, or whole barrels.